



FORTUNE & COATES

The People's Estate Agent

<https://www.fortuneandcoates.co.uk>



FORTUNE & COATES



14 Great Auger Street, Harlow, CM17 9HW

Offers in excess of £650,000

Fortune and Coates are delighted to offer to the market this spacious and versatile four-bedroom family home, situated in the desirable location of Great Auger Street.

Upon entering, you are welcomed by an inviting entrance hallway with stairs rising to the first floor and access to a convenient ground floor W/C.

The lounge/diner is a beautifully presented open-plan space, thoughtfully designed offering a warm and inviting feel, centred around a sleek, built-in media wall with a feature fireplace. This flows seamlessly into the dining area, which is a standout feature of the home. Flooded with natural light, the space benefits from large windows and French patio doors, creating a seamless indoor-outdoor connection. There is ample room for a full dining table and chairs, making it ideal for hosting, with direct access to the rear garden.

Lounge/diner 21'3" x 12'1" (6.49 x 3.70)

Kitchen 13'0" x 8'11" (3.98 x 2.74)

Garage 8'11" x 19'3" (2.72 x 5.88)

Master bedroom 8'11" x 19'1" (2.72 x 5.83)

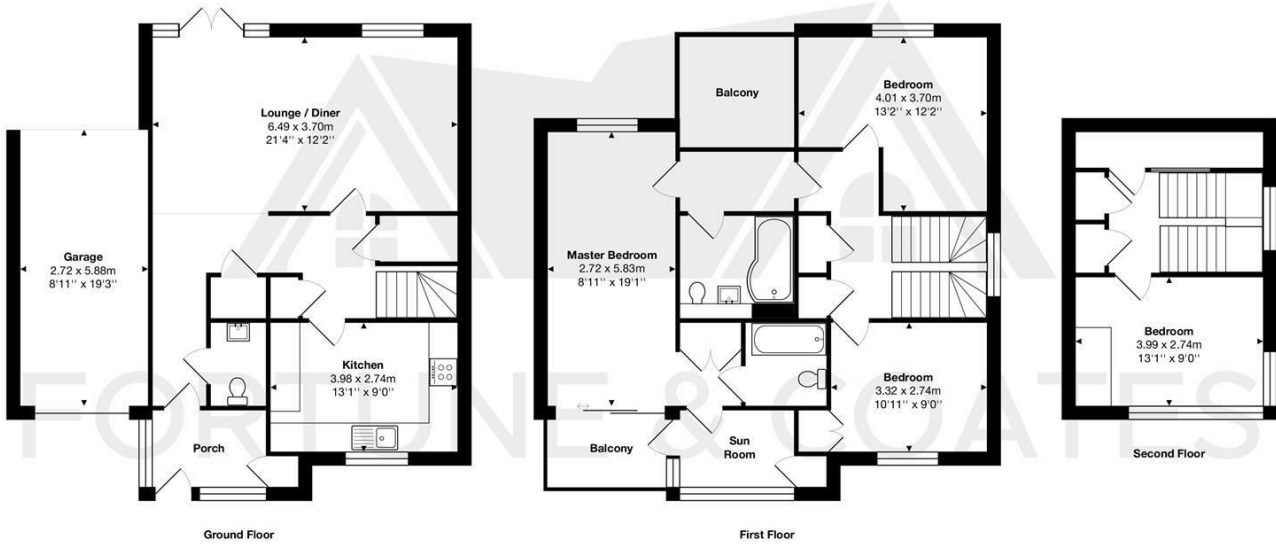
Bedroom 13'1" x 12'1" (4.01 x 3.70)

Bedroom 10'10" x 8'11" (3.32 x 2.74)

Bedroom 13'1" x 8'11" (3.99 x 2.74)

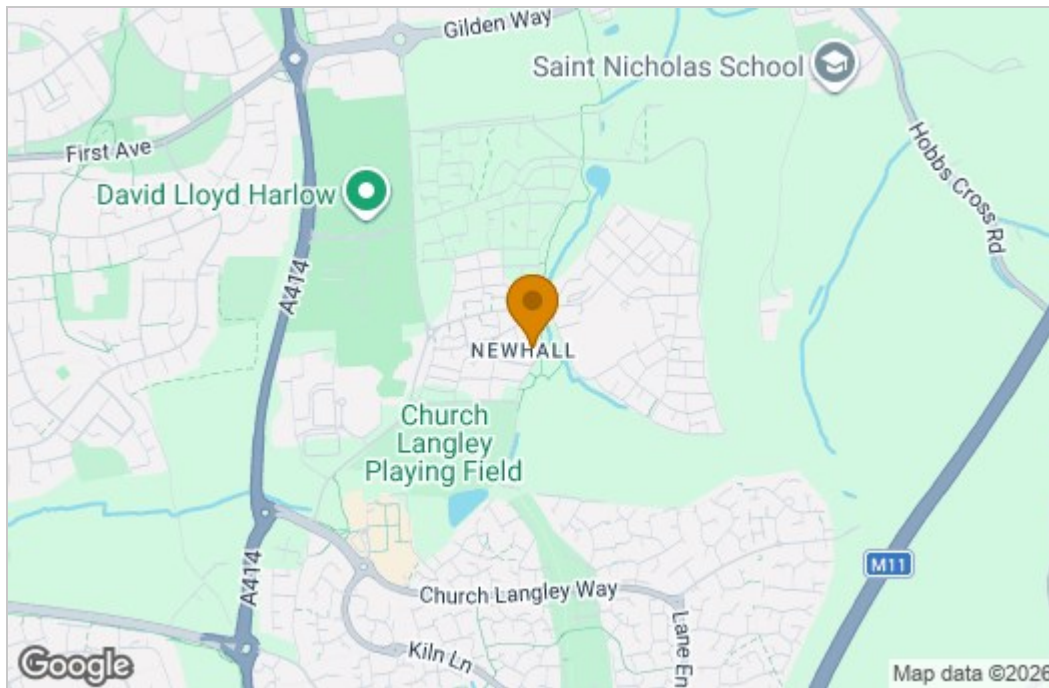
AGENT NOTE: The information provided about this property does not constitute or form part of an offer or contract, nor may it be regarded as representations. All interested parties must verify accuracy and your solicitor must verify tenure/lease information, fixtures & fittings and, where the property has been extended/converted, planning/building regulation consents. All dimensions are approximate and quoted for guidance only as are floor plans which are not to scale, and their accuracy cannot be confirmed. Reference to appliances and/or services does not imply that they are necessarily in working order or fit for the purpose.

Floor Plan

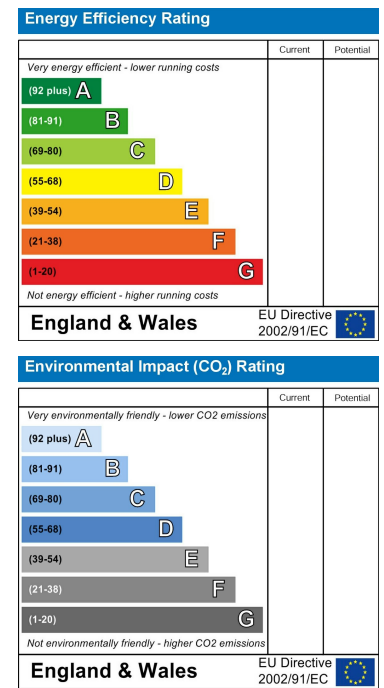


Total Area: approx. 169.7 m² ... 1826 ft² (excluding balcony)
 THE FLOORPLAN IS FOR ILLUSTRATIVE PURPOSES ONLY AND IS NOT TO SCALE.
 Measurements and features are approximate and may differ from the actual property. Verify all details independently; no liability is accepted for errors or omissions.
 Property marketing provided by www.fotomarketing.co.uk

Area Map



Energy Efficiency Graph



These particulars, whilst believed to be accurate are set out as a general outline only for guidance and do not constitute any part of an offer or contract. Intending purchasers should not rely on them as statements of representation of fact, but must satisfy themselves by inspection or otherwise as to their accuracy. No person in this firm's employment has the authority to make or give any representation or warranty in respect of the property.